

September 12-14

2018

Les Comtes de Méan
Liège, Belgium

6th International Meeting on Aortic Diseases

New insights into an old problem CHU Liège, APF

www.chuliege-ima.be

**Lesson learned from
local experiences in
Liège with type A
dissection.**

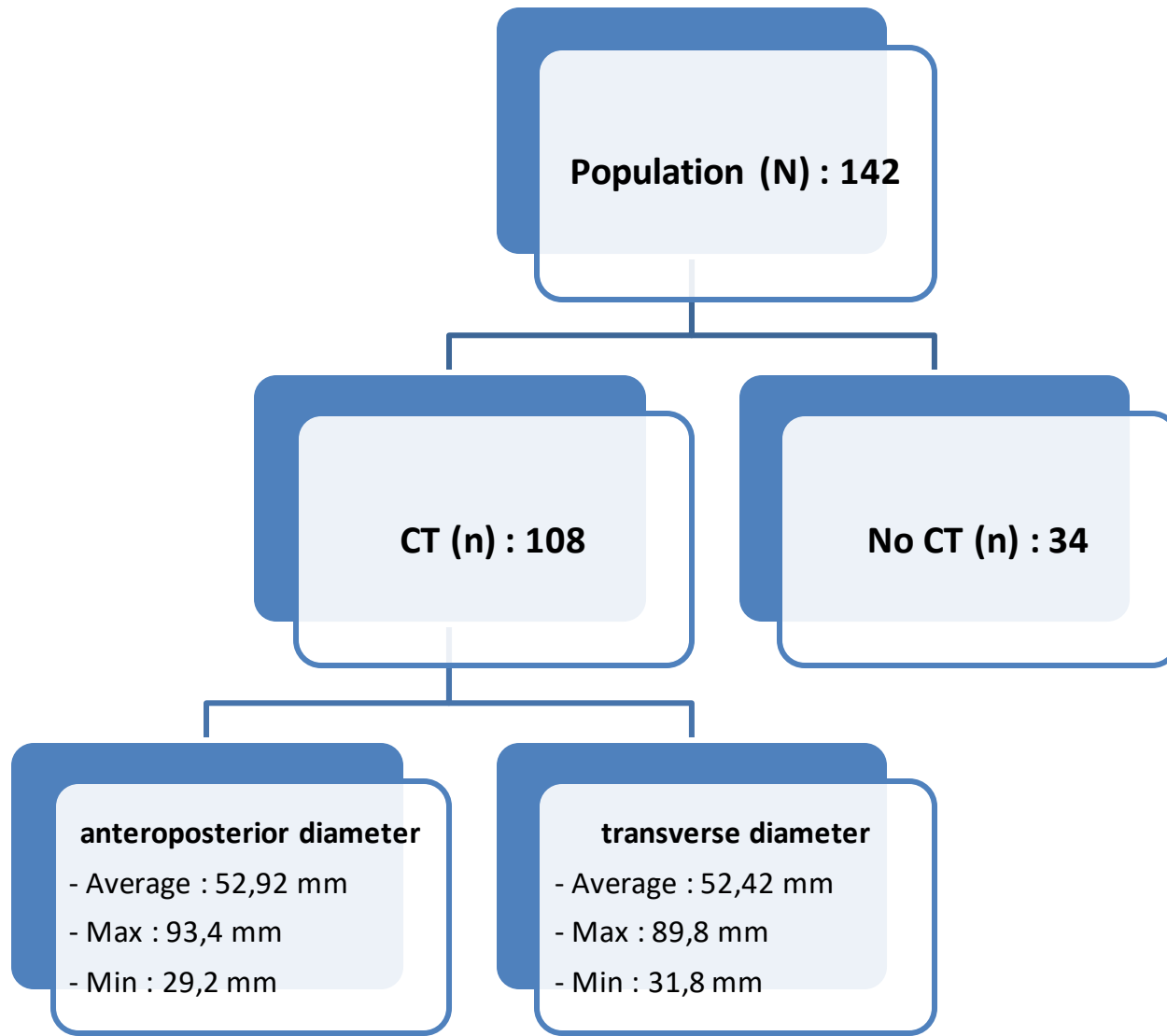
*Department of Cardiovascular
and Thoracic Surgery
University hospital of Liège,
Belgium*



CHU
de Liège



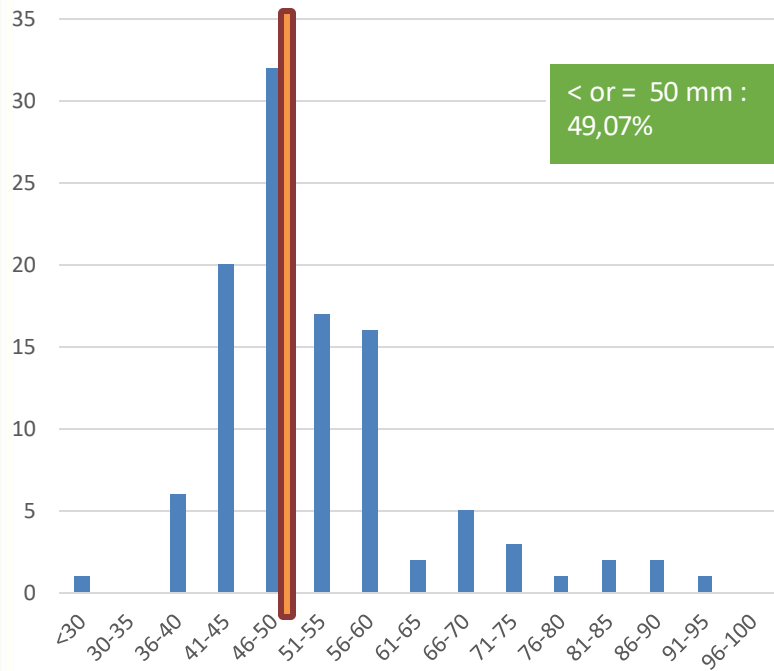
Material & Methods



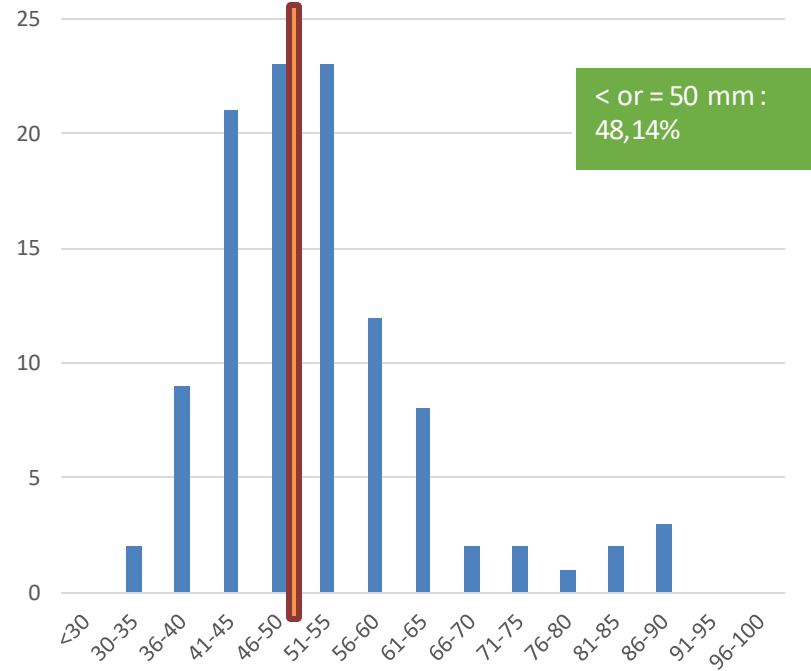


Diameter at admission : < 50 mm

ascending aorta (anteroposterior)



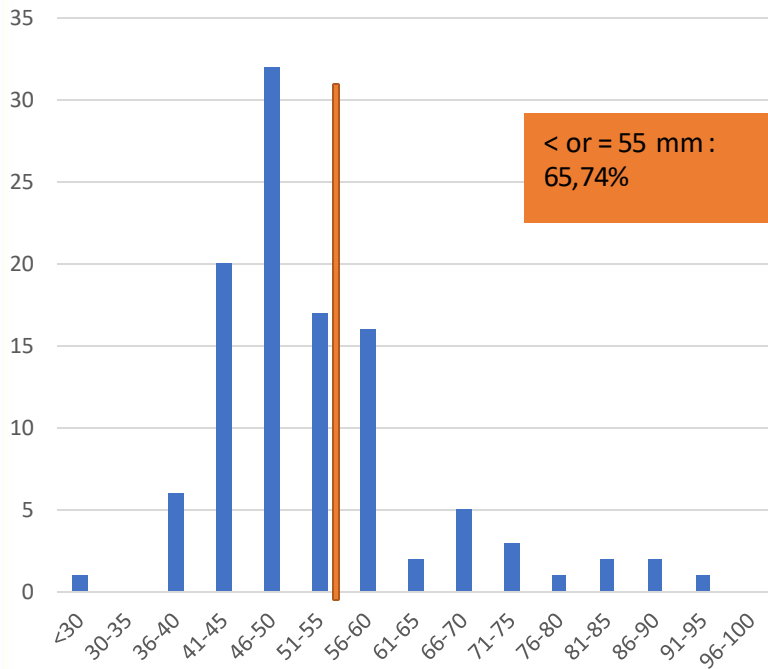
ascending aorta (transverse)



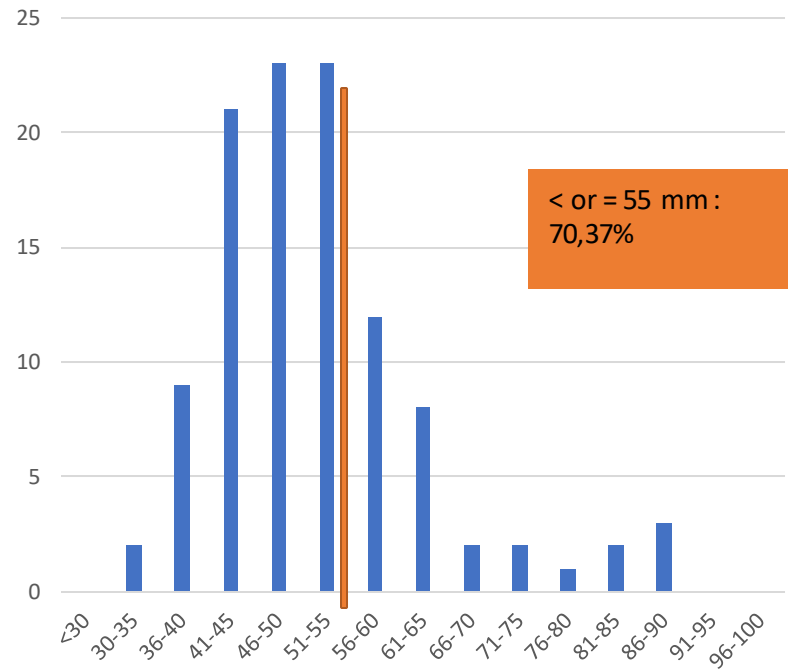


Diameter at admission : < 55 mm

ascending aorta (anteroposterior)



ascending aorta (transverse)



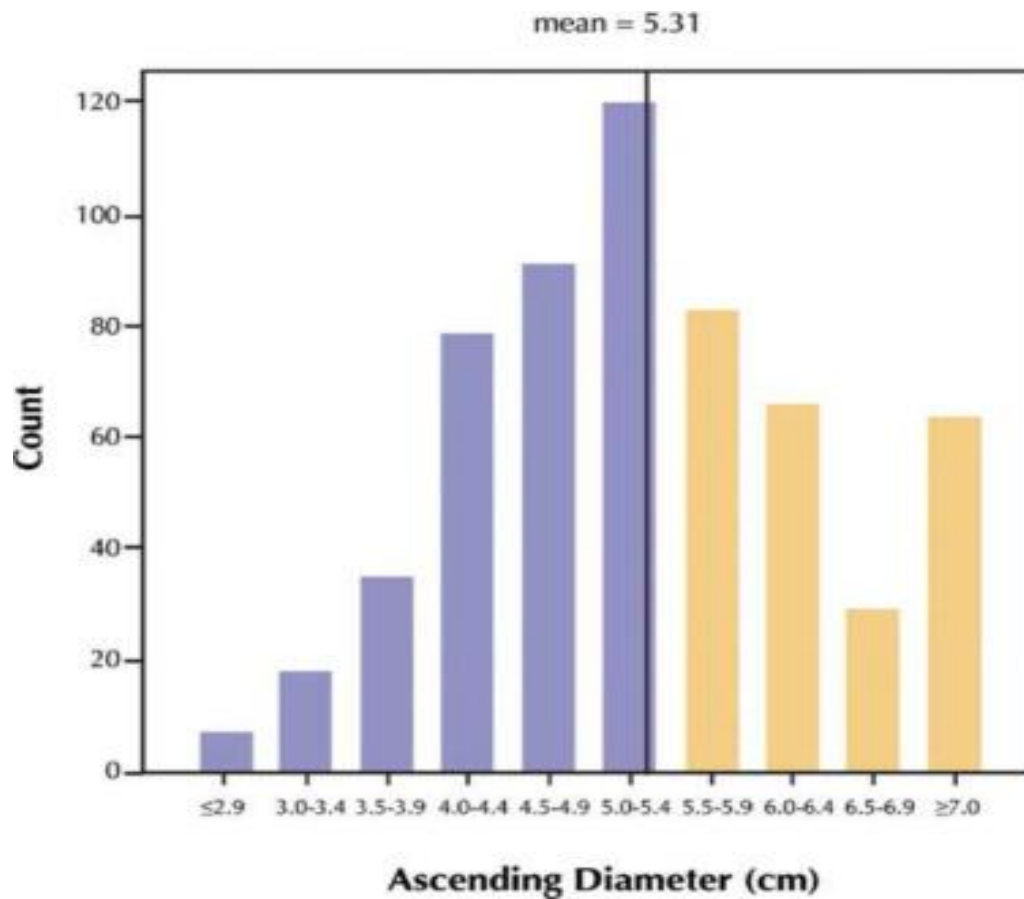


Figure 1. Distribution of aortic sizes at the time of presentation with acute Type A aortic dissection (cm). Purple bars indicate patients with diameters ≤ 5.5 cm. Data from IRAD by Pape et al.¹³ (Adapted with permission from Elefteriades and Farkas.¹²) (Col...

Bulat A. Ziganshin, John A. Elefteriades

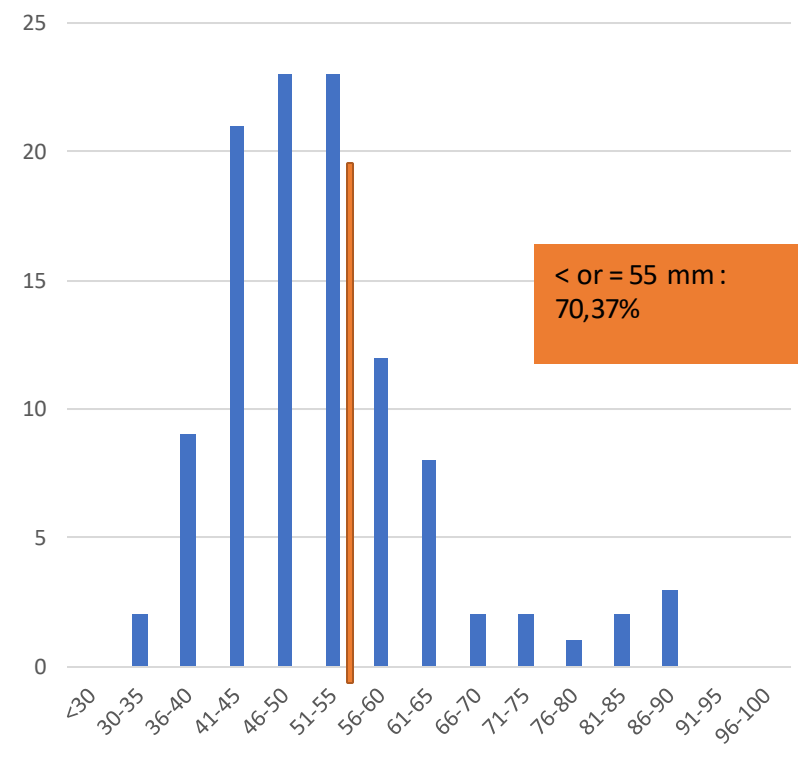
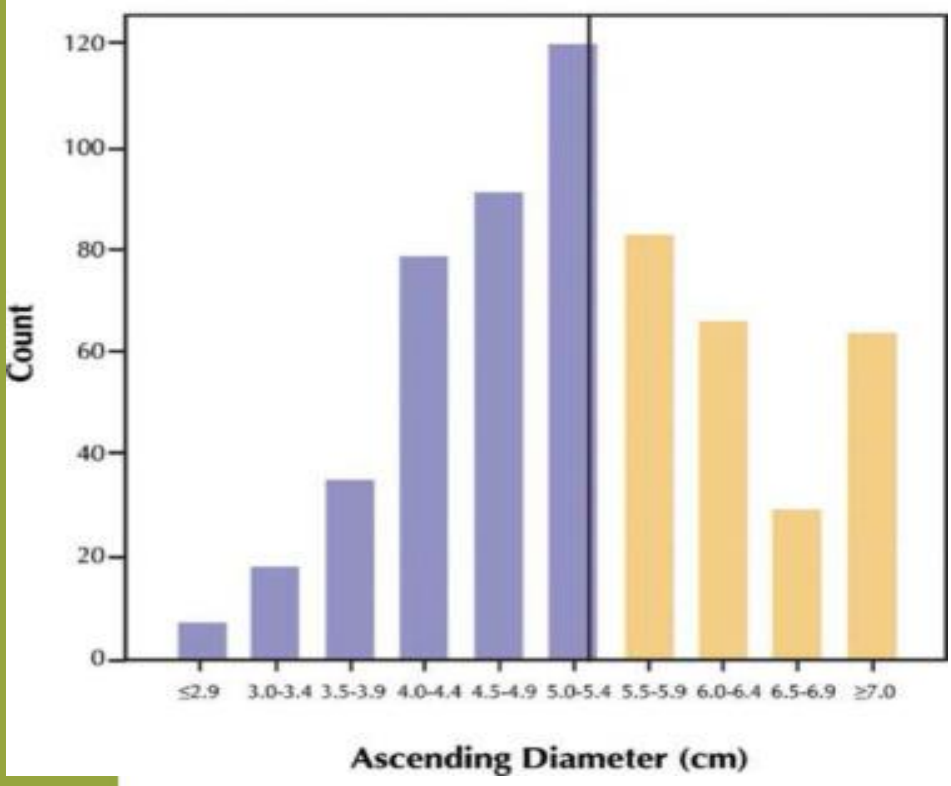
Treatment of Thoracic Aortic Aneurysm: Role of Earlier Intervention

Seminars in Thoracic and Cardiovascular Surgery, Volume 27, Issue 2, 2015, 135–143

<http://dx.doi.org/10.1053/j.semtcvs.2015.07.006>



mean = 5.31





Do we need a new guideline?

Indication for surgery in men and men is different?

Can « Z – score » help us to take a decision?